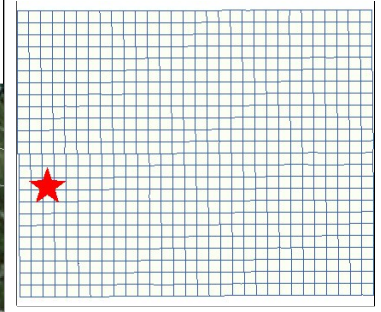
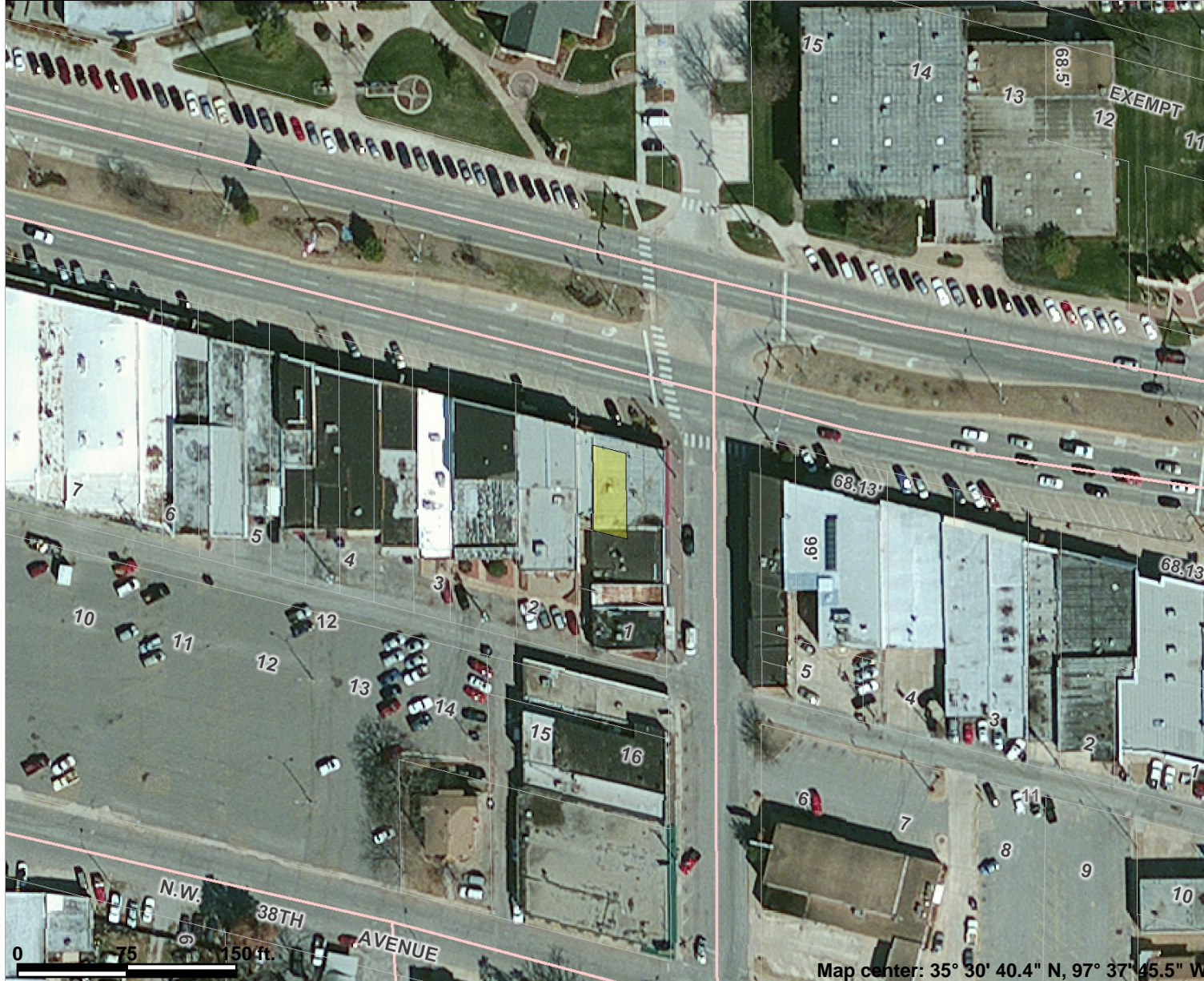




Property # 693



Legend

- Annotation
- Sections
- Streets
- Parcels
- North Canadian River
- Rivers & Creeks
- Lakes
- Aerials (flown Feb 28th - March 23rd, 2011)
- County Background



Scale: 1:1,265

Map center: 35° 30' 40.4" N, 97° 37' 45.5" W

This map is a user generated static output from an Internet mapping site and is for general reference only. Data layers that appear on this map may or may not be accurate, current, or otherwise reliable. THIS MAP IS NOT TO BE USED FOR NAVIGATION.